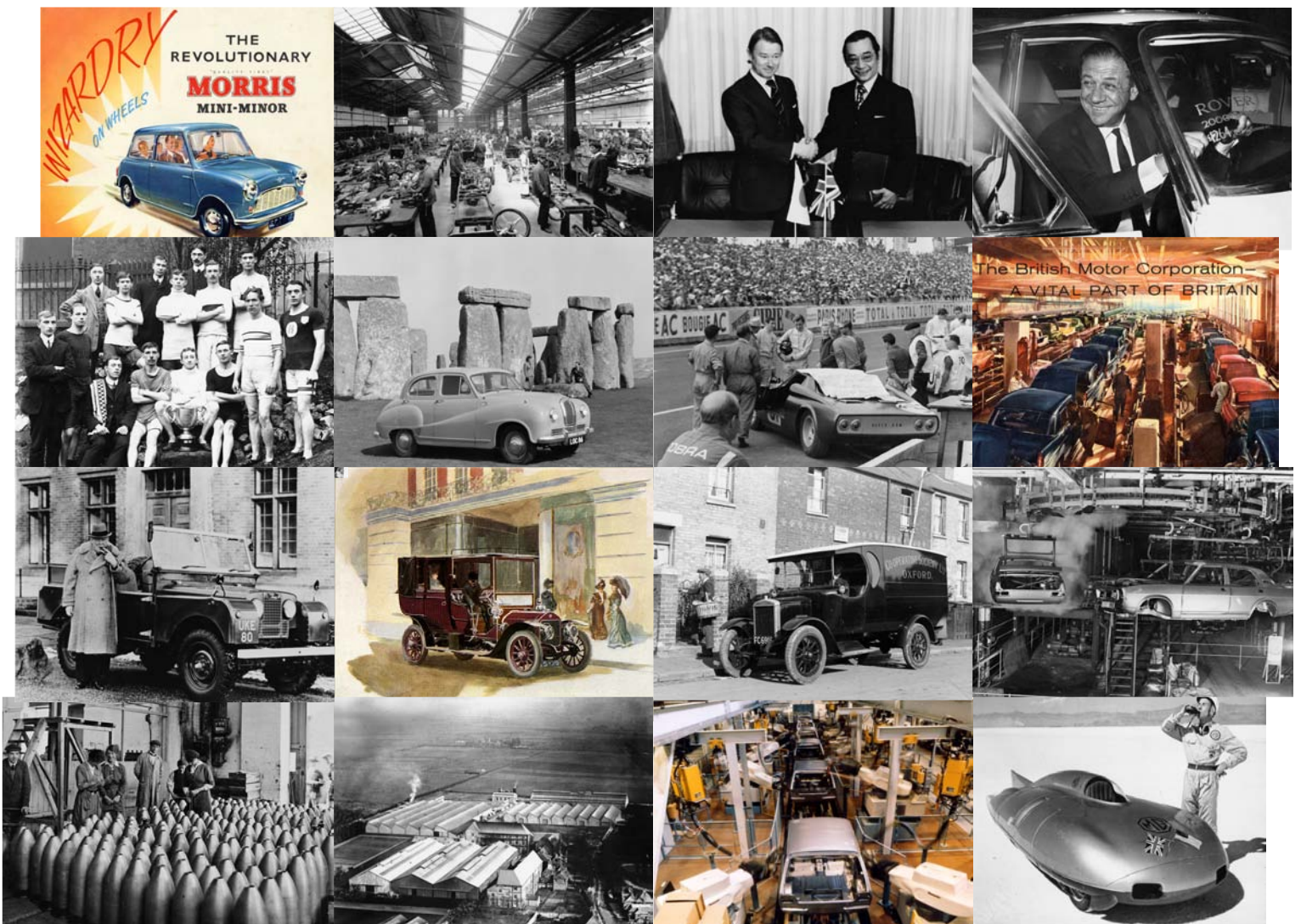




Historic Vehicle Collection

at the Heritage Motor Centre



British Motor Industry Heritage Trust

Heritage Motor Centre, Banbury Road, Gaydon, Warwick CV35 0BJ

Historic vehicles at the British Motor Industry Heritage Trust, Heritage Motor Centre, Gaydon

The following list shows vehicles on display and in the reserve collection at the Heritage Motor Centre. Not all of the Trust's collection is on display at any one time. Visitors are advised to check before making a special journey to see a particular car.

Part I, vehicles in BMIHT's permanent collection, held in trust

page 3

Part II, historic vehicles on longer term loan to BMIHT

page 17

Part III, non-vehicle collections (overview)

page 23

British Motor Industry Heritage Trust
Heritage Motor Centre
Banbury Road
GAYDON
Warwickshire
CV35 0BJ

 +44 1926 641188

 +44 1926 641555

 enquiries@heritage-motor-centre.co.uk

www.heritage-motor-centre.co.uk

Enquiries about vehicles in the collection can be made to the Curator

© British Motor Industry Heritage Trust, 2010

PART I

Vehicles in the BMIHT Collection

AEC

1934 AEC Q coach only surviving Q coach, ex-Silver Service, Darley Dale, Derbyshire

Albion

1901 Albion A1 dogcart

1909 Albion A6 tourer

Alvis

1928 Alvis FWD supercharged Leon Cushman's 1928 Ards Tourist Trophy car, in which he came second

1965 Alvis TE21

Armstrong Siddeley

1955 Armstrong Siddeley 346 Sapphire

Aston Martin

2001 Aston Martin V12 Vanquish Geneva Show car

Austin

1907 Austin 30hp oldest surviving Austin known, originally a Birmingham Parks bus, used as an ambulance in WWI

1907 Austin 40hp York landaulette

1908 Austin 100hp Grand Prix racer Moore-Brabazon's 1908 French Grand Prix car, finished 18th

1910 Austin 7hp

1911 Austin Town Carriage

1914 Austin 20hp Vitesse

1922 Austin Twenty tourer driven to Cape Town and back (37,000 miles) by a Mr AE Filby in 1934

1923 Austin Seven Chummy

1931 Austin Seven Swallow saloon

1932 Austin 12/6 Harley

1933 Austin Seven tourer

Austin (continued)

- 1934 Austin Seven side valve racer Murray Jamieson designed 'works' car , driven by Hadley
- 1936 Austin Seven twin cam racer 'works' car , driven by Hadley, Goodacre and Dodson
- 1937 Austin I8 Chalfont
- 1938 Austin Seven Ruby
- 1946 Austin Sixteen BSI millionth Austin car produced, signed by Austin workers. made on 25th June 1946
- 1948 Austin A40 Devon, sectioned chassis 1948 Motor Show exhibit, October at Earl's Court
- 1951 Austin A90 Atlantic
- 1952 Austin Champ
- 1955 Austin A90 Westminster Richard Pape's car for Cape Cold to Cape Hot expedition (Norway to South Africa)
- 1955 Austin A30 Seven
- 1958 Austin Nash Metropolitan
- 1960 Austin A40 Farina
- 1963 Austin A60 Cambridge
- 1965 Austin I100 estate, sectioned
- 1967 Austin I100 automatic
- 1968 Austin I800 rally car London-Sydney Marathon car, driven by Hopkirk, Nash and Poole
- 1969 Austin Zanda styling model by Harris Mann to demonstrate BL's new CAD design tools; GRP buck
- 1969 Austin Ant Issigonis designed four wheel drive, transverse engine car, based on Mini components
- 1970 Austin Maxi rally car World Cup Rally car, London to Mexico City, driven by HRH Prince Michael of Kent
- 1973 Austin Allegro, sectioned
- 1974 Austin I300, SRV5 safety research vehicle
- 1974 Austin I800, SRV3 safety research vehicle
- 1976 Austin ADO88 SEP2 pre-Metro prototype small car
- 1978 Austin LC10 prototype pre-Maestro prototype small/medium car
- 1980 Austin Metro I.3HLS
- 1981 Austin Maxi I750L last vehicle off the line
- 1982 Austin Allegro I.5HL last vehicle off the line
- 1983 Austin Maestro first production vehicle off the line
- 1984 Austin Metro Notchback prototype Metro with a boot
- 1995 Montego saloon last vehicle off the line, signed by line workers, technically last Austin

Austin-Healey

- 1966 Austin Healey 3000 mark III

Bedford (Lucas)

1980 Bedford Lucas Electric Dormobile Prince Philip's electric powered personal transport for use in London

Benz

1888 Benz motor carriage (replica)

BMW

1928 BMW Dixi Austin Seven built under licence

Green's

1898 Greens lawn mower (with De Dion engine)

Hillman

1969 Hillman Super Imp

Honda

1979 Honda Prelude presented to Michael Edwardes by Honda on Honda-Rover collaboration signing

Jaguar

2000 Jaguar R1 Formula One racing car modified Stewart SR4, in 2004 livery

Land Rover and Range Rover

1948 Land Rover 80", number one first Land Rover produced

1948 Land Rover 80", station wagon rare Tickford designed estate, one of only 651. Fewer than 20 survivors

1954 Land Rover 86" royal ceremonial 'State I' - Queen's review vehicle

1955 Road Rover prototype for a more 'comfortable' Land Rover product (akin to Range Rover but 10 years earlier)

Land Rover and Range Rover (continued)

- 1958 Road Rover series II attempt, along the lines of the American station wagon. This is the last of nine prototypes
- 1958 Land Rover Cuthbertson's conversion fitted with large tracks
- 1958 Land Rover 88", royal review vehicle Queen's review vehicle 'State II'
- 1962 Land Rover series II 129" pick-up one of two surviving from five prototypes
- 1963 Land Rover 112" recovery wagon experimental 112" forward control, Land Rover's own breakdown truck
- 1966 Land Rover series IIa 109" station wagon HM Queen's personal car and an early 6-cylinder model
- 1967 Land Rover Shorland armoured car armoured car for Northern Ireland
- 1968 Land Rover 'Pink Panther' SAS desert specification vehicle, painted in pink camouflage
- 1969 Range Rover first vehicle off the line
- 1971 Range Rover, 'Darren Gap' MoD expedition from Alaska to Cape Horn via difficult Darien Isthmus crossing
- 1974 Range Rover royal ceremonial Queen's review vehicle which replaced 1954 Land Rover State I
- 1975 Land Rover 101, forward control with Rubery trailer
- 1976 Land Rover 88" station wagon the one millionth Land Rover produced
- 1981 Land Rover 110" station wagon, sectioned
- 1982 Land Rover 88", aluminium unpainted body, aluminium polished
- 1983 Land Rover 110" station wagon HM Queen's personal car and an V8 model
- 1983 Land Rover ½ ton
- 1984 Land Rover Discovery, Jay 5 prototype oldest prototype, used for Hot Environmental Validation
- 1986 Land Rover series III estate last vehicle off line
- 1986 Land Rover Llama box van
- 1987 Land Rover 90 'crocodile' exhibition vehicle with body hinged off chassis
- 1987 Land Rover Llama, box van prototype forward control L/R for Army, never put into full production
- 1988 Land Rover 100", submergible with floats, capable of crossing water
- 1988 Land Rover 90, 40th Anniversary model
- 1989 Land Rover Discovery Tdi first production first series vehicle off the line
- 1989 Land Rover Discovery prototype
- 1991 Land Rover, 'Camel Trophy' special equipment for gruelling Camel Trophy rally
- 1994 Range Rover P38A first of the second generation Range Rover off the production line
- 1994 Land Rover CB40 mule prototype with Maestro van body
- 1994 Land Rover CB40 prototype Freelander design prototype
- 1994 Range Rover 4.2 LSE the late Queen Mother's personal car
- 1994 Land Rover 90 NAS soft top V8 for the North American market
- 1995 Land Rover 'Judge Dredd' City Cab silver utility car from the film
- 1996 Range Rover 'Classic' last of the original Range Rovers, a specially built no. 26 of 25 special edition vehicles

Land Rover and Range Rover (continued)

- 1997 Land Freelander 5-door 1.8 Xi first Freelander off the line, signed by all the line workers
- 1997 Land Rover LCV2/3 all-aluminium Defender concept
- 1997 Land Rover Discovery Paris Dakar Rally highly modified motorcycle support racer. 31st in Rally
- 1997 Range Rover police car Strathclyde Police armoured tactical response vehicle
- 1997 Land Rover Discovery II Td5 'Tempest Trek' 30,000km expedition to launch the new Discovery
- 1998 Land Freelander 5-door Td4 Fifty-50 Challenge, travelled through 50 countries in 50 days
- 2001 Range Rover L322 first of the third generation Range Rover off the production line. German spec. model
- 2001 Land Rover 110HCPU Tomb Raider Lara Croft's action vehicle from the film
- 2002 Land Rover Discovery series II G4 Challenge organisers' car used on Australian Stage
- 2004 Land Rover Discovery 3 first production third series vehicle off the line, LR3 American spec.
- 2004 Range Stormer spectacular design concept that paved the way for the Range Rover Sport
- 2005 Land Rover Discovery series II Td5 Premium last production second series vehicle off the line
- 2005 Range Rover Sport TDV6 SE first Range Rover Sport off the production line
- 2006 Land Freelander 3-door hardback last original series Freelander off the line and last from Solihull
- 2006 Land Freelander 2 Td4 HSE first second series Freelander off the line and first from Halewood

Leyland

- 1924 Leyland Trojan tourer
- 1927 Leyland Straight Eight Parry-Thomas' eight cylinder racing car
- 1972 Leyland Crompton Electricar unusually styled prototype electric powered small city car

MG

- 1925 MG 'Old Number One' Cecil Kimber's special, not the first MG as such
- 1931 MG 18/80 Speed model one of the last 18/80 mark I produced (of 500)
- 1934 MG PA Midget, sectioned
- 1936 MG NB Magnette
- 1938 MG EX135 record car Goldie Gardner's record car, reached 200 mph+ on the Dessau Autobahn, Germany
- 1953 MG YB saloon Len Shaw's 'semi-works' rally car
- 1954 MG EX179 record car Eyston's record car, achieved 170 mph in 1954 at Utah Salt Flats
- 1954 MG TF
- 1957 MG EX181 record car Stirling Moss/Phil Hill record car, reached 254.9 mph at Utah Salt Flats
- 1958 MG ZB Magnette

MG (continued)

- 1958 MGA twin cam, sectioned
- 1969 MG MGB roadster
- 1969 MG MGB, sectioned in two halves
- 1972 MGB GT, SSV1 safety systems vehicle, research car
- 1979 MG Midget 1500 last vehicle off line
- 1980 MG MGB roadster last vehicle off line
- 1980 MG MGB GT last vehicle off line
- 1983 MG Metro 6R4 prototype test car for development of the 6R4 rally car
- 1983 MG Metro 'Alum' prototype with aluminium body
- 1985 MG Metro 6R4 Clubman version of Austin Rover's successful Group B rally car
- 1985 MG EX-E stunning concept car for a large sports car to take the V6V 6R4 engine; styling buck
- 1986 MG Metro 6-cylinder turbo engineering prototype with experimental 6-cylinder engine
- 1989 MG DR2/PR5 one of the rejected concepts from the design stages of the MGF, designed by Roy Axe
- 1994 MGF prototype 'camouflaged' in a Metro van body, used to test running gear
- 1998 MG EX255 record car car that aimed (and failed) to beat EX181 record. Driven by Andy Green

Mini

- 1959 Morris Mini-Minor Number One (621 AOK) first production Mini-Minor off the line
- 1959 Austin Mini 'Downton' Daniel Richmond's racing conversion
- 1962 Mini 'Twini' Moke an engine at each end and two gearboxes
- 1962 Austin Mini van 'John Cooper Garages' replica of the famous Cooper works van
- 1963 Morris Mini-Cooper S Monte Carlo (33 EJB) Paddy Hopkirk's 1964 Monte Carlo rally winner
- 1964 Morris Mini-Cooper S Monte Carlo (AJB 44B) Timo Makinen's 1965 Monte Carlo rally winner
- 1964 Mini, ADO 34 prototype small sports car, designed to replace the MG Midget but never produced
- 1965 Austin Mini, LHD sectioned
- 1966 Morris Mini-Cooper S Monte Carlo (LBL 6D) Rauno Aaltonen's 1967 Monte Carlo rally winner
- 1968 Morris Mini-Minor glass fibre body prototype experimental plastic bodied car
- 1969 Mini 9X prototype (blue) Issigonis hatchback design to replace the Mini
- 1970 Mini, ADO 70 small open car built on a Mini Clubman chassis, bodied by Michelotti but never produced
- 1971 Mini Cooper S mark 3 one of the last Cooper S models
- 1974 Mini Clubman, SRV4 safety research vehicle
- 1976 Mini 9X gearless prototype (green) Issigonis Mini prototype with experimental gearless transmission
- 1984 Mini Moke Portuguese built Moke

Mini (continued)

1990 Mini ERA turbo

1992 Mini Cord Venezuelan built car with plastic body

1995 Mini 'Minki 2' prototype Mini with increased track and K series engine

2000 Mini Cooper the very last of the original Mini design. Driven off the Longbridge line by Lulu. 5,387,862 produced.

2001 MINI Cooper early BMW manufactured MINI

Morgan

1935 Morgan Supersports three-wheeler Matchless engined

Morris

1913 Morris Oxford an early White & Poppe engined 'Bullnose'

1921 Morris F-type 'Silent Six' Lord Nuffield's personal transport, only survivor of approximately fifty produced

1924 Morris T type 1-ton truck the first Morris truck produced

1925 Morris Oxford 'Red Flash' Wellsteed's Brooklands racing special

1929 Morris Minor tourer

1931 Morris Cowley taxi

1936 Morris Eight saloon

1948 Morris Minor MM, number one the first production vehicle off the line

1952 Morris Oxford MO

1953 Morris Minor fire engine one-off built for the Morris factory at Cowley, Oxford

1960 Morris Minor convertible

1968 Morris Minor GPO telephone engineer's van

1969 Morris Minor Traveller

1971 Morris 1800 S

1973 Morris 1300, plastic bodied experimental car with glass fibre body

1974 Morris Marina, SRV2 safety research vehicle

1984 Morris Ital estate the last vehicle off the line and the last Morris produced

Reliant

1970 Reliant Regal Supervan III the infamous three-wheeler van; in Post Office livery

1971 Reliant Scimitar SE5a glass fibre sports touring estate

Riley

1899 Royal Riley tricycle the oldest surviving Riley car known

1907 Riley Popular forecar

1907 Riley 9hp V-twin

1909 Riley 10hp V-twin

1933 Riley Nine Kestrel

1952 Riley RMA 1½ litre

1962 Riley Elf

Rolls Royce

2003 Rolls Royce Phantom BMW design built at Goodwood

Rover

1904 Rover 8hp the oldest surviving Rover car known

1906 Rover 6hp

1907 Rover 20hp tourer

1911 Rover Imperial motorcycle

1912 Rover 12hp landaulette once owned by Lord Catto, governor of the Bank of England Scotland

1915 Rover Imperial motorcycle

1922 Rover Eight flat twin

1929 Rover Light Six 'Blue Train' same model as the Rover with which Dudley Noble raced the French 'Blue train'

1930 Rover Meteor Corsica Corsica sedanca coupé body, once owned by the Garlick family of South Africa

1936 Rover 14 Streamline

1948 Rover P3 75

1950 Rover P4 75 'Cyclops' early 15 bar grille model

1951 Marauder tourer one of 15 sports tourers built on the Rover P4 chassis, conceived by three Rover employees

1956 Rover T3 gas turbine Rover's third gas turbine prototype, rear engine, four wheel drive coupé

1961 Rover T4 gas turbine Rover's fourth gas turbine, based on their forthcoming 'P6' saloon; front engine

Rover (continued)

- 1963/5 Rover BRM gas turbine racing car Graham Hill, Ritchie Ginther and Jackie Stewart's Le Mans car
- 1965 Rover 3 litre coupé
- 1965 Rover 2000 (P6)
- 1967 Rover P6BS Rover/Alvis mid-engined sports car prototype; only one full size car
- 1968 Rover P8 Mantelay Rover design for a new large car which was never produced
- 1972 Rover P5B Harold Wilson's and later Margaret Thatcher's Prime Ministerial car. Fitted with large ashtrays for HW
- 1975 Rover SDI estate one off prototype for an SDI estate car; used by Michael Edwardes as his daily transport
- 1980 Rover SDI, ghosted section
- 1981 Rover ECV 3/1 prototype for an environmentally friendly, lightweight and efficient small car
- 1984 Project 90, number one prototype small car
- 1986 Rover 825 first production vehicle off the line
- 1986 Rover SDI Vitesse last vehicle off the line
- 1986 Rover CCV concept car concept design for a new Rover large car: styling buck
- 1995 Rover 214Si first R3 200 production vehicle off the line
- 1998 Rover 114GTa last Metro/R6 off the line; signed by all involved with Metro project
- 1999 Rover '75' 2.5 Connoisseur first of line of R40 model
- 2005 Rover '75' CDT last of line of 75 and the last ever Rover. Handbuilt during MG Rover administration

Standard

- 1907 Standard 30hp Roi de Belges oldest surviving Standard car known
- 1913 Standard 20hp Cheltenham
- 1929 Standard Nine Teignmouth
- 1934 Standard 10/12 Speedline
- 1955 Standard Eight
- 1963 Standard Ensign one of the very last cars to bear the Standard name

Thornycroft

- 1904 Thornycroft 20hp
- 1907 Thornycroft 40hp TT racer 1908 Isle of Man Tourist Trophy racing car
- 1908 Thornycroft 30hp TT racer 1908 Isle of Man Tourist Trophy racing car

Triumph

1953 Triumph Mayflower

1959 Triumph TR3

1965 Triumph Vitesse

1969 Triumph GT6

1970 Triumph I300

1972 Triumph Dolomite Michelotti one off prototype with experimental Michelotti design body

1974 Triumph TR6

1975 Triumph SD2 'Allied' only surviving prototype for a Dolomite replacement which never reached production

1977 Triumph Stag last vehicle off the line

1977 Triumph 2500S estate last vehicle off the line

1978 Triumph TR7 V8 rally car Tony Pond's Ypres and Manx Rally winning car

1978 Triumph Lynx prototype for a fastback coupé to replace the Stag, similarly styled to the TR7

1978 Triumph Lynx Broadside prototype GT car as a successor for the Lynx project but never came to fruition

1979 Triumph TR7 Broadside prototype convertible as a successor for the Lynx project but never came to fruition

1980 Triumph Spitfire 1500 last vehicle off the line

1980 Triumph Dolomite Sprint last vehicle off the line

1981 Triumph TR7 last vehicle off the line

1984 Triumph Acclaim last vehicle off the line and the last Triumph produced

Vanden Plas

1965 Vanden Plas 4-litre R

1973 Vanden Plas 2200 prototype one off design for a VDP version of the BL Princess range

Vauxhall

1964 Vauxhall Viva HA deluxe

Wolseley

1896 Wolseley Autocar No.1 the first Wolseley car designed by Herbert Austin; exhibited at Crystal Palace in 1896

1896 Wolseley tricar the second of Austin's designs but not an official Wolseley

1899 Wolseley 3½hp voiturette Austin designed first four wheeled Wolseley car, actually the only one produced

Wolseley (continued)

- 1901 Wolseley 10hp tonneau
- 1904 Wolseley 6hp phaeton
- 1919 Wolseley E2A Stellite
- 1923 Wolseley E3
- 1932 Wolseley Hornet EW special Whittingham and Mitchell body
- 1934 Wolseley Nine
- 1939 Wolseley Eight Lord Nuffield's personal transport
- 1951 Wolseley 6/80 police car
- 1957 Wolseley 1500
- 1975 Wolseley 2200 last vehicle off the line and the last Wolseley produced

Bicycles and pedal cars

- 1966 Austin J40 pedal car (white)
- 1971 Austin J40 pedal car (blue)
- 1971 Austin J40 pedal car (red) one of the last batch, previously displayed in the Bargoed plant
- 1903 Morris bicycle bought back by William Morris; built by him for a tall vicar
- 1985 Sinclair C5
- 1876 Starley Coventry Lever tricycle Starley was the forerunner of the Rover Company
- 1880 Starley Salvo tricycle favoured by Queen Victoria
- 1886 Starley 'Rover' safety bicycle first use of Rover name and first bicycle with 'modern' frame design
- 1909 Rover lady's bicycle
- 1924 Rover gentleman's bicycle

PART II

Vehicles on longer term loan to BMIHT

AEC

1921 AEC S-type bus London Transport

Aston Martin

1952 Aston Martin DB2 property of Sir Stirling Moss

1982 Aston Martin Nimrod Group C race car World Sportscar Championship and Le Mans racer

2003 Aston Martin DB AR1 one of 99 and one of only two RHD cars. Built for the Californian market

2005 Aston Martin DBR9 GT chassis 101; first privately entered and most successful DBR9 GT race car

2007 Aston Martin V12 Vantage RS concept prototype for the Vantage with power from the DBRS9 GT racer

2008 Aston Martin DBS stunt car from the James Bond movie 'Quantum of Solace'

Austin

1928 Austin Seven Avon Sportsman's two seater only one produced (by New Avon of Warwick)

1952 Austin A30 convertible only factory convertible produced

1978 Austin Princess Ogle Triplex experimental car to show off new techniques in automotive glass

Austin-Healey

1959 Austin Healey 3000 rally car first 3000 produced, rallied by BMC competition department

Ford

1922 Ford Model T tourer American built car

1933 Ford Model Y Dagenham built. This particular car has never been restored

1958 Ford Anglia 100E

1968 Ford Cortina 1600E

2001 Ford TH!NK electric

Hutchings

1935 Royal Winchester caravan

Issigonis

1938 Issigonis 'Lightweight Special' revolutionary handbuilt, aluminium single seater hillclimb car

Jaguar

1967 Jaguar E-type 4.2 roadster for many years displayed in the ballroom of the liner RMS Queen Mary

Lotus

1953 Lotus Mark VI once Colin Chapman's car

1969 Lotus Seven Twin Cam SS the first of thirteen of the most powerful of Sevens. Earl's Court Motor Show car

LTI

2006 LTI TX4 taxi

March

1970 March Ford 701 Jackie Stewart's Tyrrell team car. Second place at both the Dutch and Italian Grands Prix.

1978 March-Triumph F3 car Nigel Mansell's Formula 3 racing car

MG

1932 MG J2

1936 MG SA

2004 MG XPower SV

Morgan

1939 Morgan 4-4 flat-rad, Coventry Climax powered car

Norton

1987 Norton Interpol RAC motorcycle

Rover

1966 Rover/Alvis prototype 'Gladys' designed by David Bache on a Rover P6 chassis, body built by Radford

1971 Rover P5B one of the Queen's fleet of cars

1974 Rover P5B one of the Queen's fleet of cars

Standard

1952 Standard Vanguard mark I

Thunderbirds

2004 Thunderbirds FAB I Ford's interpretation of Lady Penelope's pink limousine for the Thunderbirds movie

Toyota

1992 Toyota Carina E first car off the line at Toyota's British plant at Burnaston

TVR

2001 TVR T400R GT race car successful British GT/Le Mans racer; last TVR to race at Le Mans

Vanden Plas

1969 Vanden Plas Princess royal limousine Royal limousine, used by Princess Anne

Vauxhall

1937 Vauxhall H-type Ten the first British production car with monocoque construction

1953 Vauxhall E-type Wyvern

Wolseley

1937 Wolseley 14/56 police car

Bicycles and pedal cars

1930 ATCO child's trainer training car for children with proper controls; powered by lawnmower engine

1949 Austin Pathfinder pedal car miniature of the Austin Seven racing cars

1908 Rover racing cycle Victor Johnson won the one kilometre race on this cycle in the 1908 Olympics in London

1960 Triumph TR3 pedal car an official Triumph product

PART III

Non-vehicle collections - brief overview

Covering all major former British Leyland companies:

- Technical Literature
- Engineering drawings and papers (restricted access)
- Sales literature
- Business literature
- Production records

Photographic collections (negatives, film and video):

- Canley (Standard and Triumph)
- Cowley (Morris, MG and Riley)
- Solihull (Rover and Land Rover)
- Longbridge (Austin and Mini)
- Pressed Steel
- Wolseley

Special collections:

- Sir Miles Thomas
- Lord Nuffield (William Morris)
- Lord Austin (Herbert Austin)
- Sir Alec Issigonis
- Lucas
- Nick Baldwin Collection
- Aston Martin



British Motor Industry Heritage Trust
Heritage Motor Centre, Banbury Road, Gaydon, Warwick CV35 0BJ
www.heritage-motor-centre.co.uk